

VIOLIN

# ABIDE WITH ME

COMPOSED BY WILLIAM H. MONK  
ARRANGED BY RICKY & JULIE VALADEZ

$\text{♩} = 66$  **MELANCHOLIC**

**4**

*p*

11

17 **SUL D**

**SUL D**

23 **FLOWING** **THROUGHOUT THIS SECTION THE MELODY SWITCHES BETWEEN INSTRUMENTS. MAKE SURE TO BRING IT OUT.**

*mp*

31

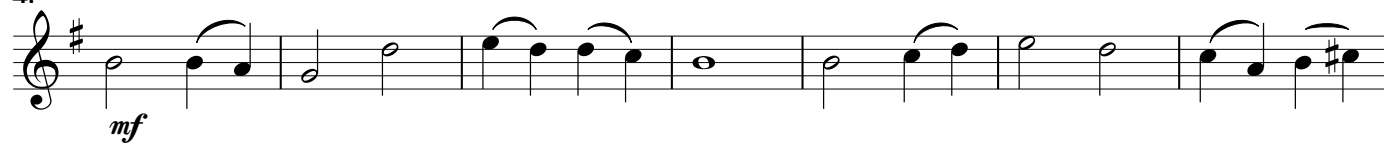
35 **2**

The sheet music is written for violin in G major (one sharp) and 4/4 time. It begins with a tempo of 66 beats per minute and a 'MELANCHOLIC' mood. The first staff (measures 1-10) starts with a four-measure rest, followed by a melody in the right hand starting on G4, moving down stepwise with some ties. The second staff (measures 11-16) continues the melody. The third staff (measures 17-22) features a 'SUL D' (sul ponticello) instruction over the D5 note in measure 17 and 22. The fourth staff (measures 23-30) is marked 'FLOWING' and 'mp' (mezzo-piano). The fifth staff (measures 31-34) continues the melody. The sixth staff (measures 35-38) ends with a two-measure rest. The key signature has one sharp (F#) and the time signature is 4/4.

COPYRIGHT © 2011 BY RICKY VALADEZ  
MAKING COPIES FOR NON-COMMERCIAL USE IS PERMITTED.  
THIS AND OTHER RICKY VALADEZ SHEET MUSIC  
MAY BE DOWNLOADED FREE AT:  
[WWW.RICKYVALADEZ.COM](http://WWW.RICKYVALADEZ.COM)

ABIDE WITH ME  
VIOLIN

41 BRIGHT



48



55



63

MOLTO RIT.

