

PIANO

I FEEL MY SAVIORS LOVE

COMPOSED BY K. NEWELL DAYLEY
ARRANGED BY RICKY VALADEZ,
JULIE VALADEZ, AND BRIGHAM WELCH

♩ = 60

Measures 1-7 of the piano arrangement. The piece is in 4/4 time with a tempo of 60 beats per minute. It begins with a piano (*p*) dynamic. The melody is in the right hand, and the bass line is in the left hand. The key signature has one flat (B-flat).

8

Measures 8-13 of the piano arrangement. The melody continues in the right hand, and the bass line provides harmonic support in the left hand.

14 MOLTO RIT.

Measures 14-17 of the piano arrangement. The tempo is marked *MOLTO RIT.* (Very Slowly). The melody and bass line continue with a slower feel.

18 A TEMPO RIT.

Measures 18-21 of the piano arrangement. The tempo is marked *A TEMPO* (Return to original tempo) and *RIT.* (Ritardando). The melody and bass line continue.

22 A TEMPO

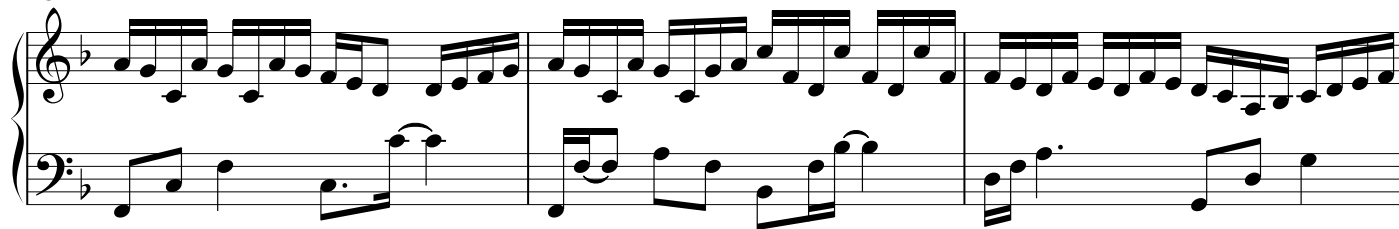
Measures 22-25 of the piano arrangement. The tempo is marked *A TEMPO*. The melody and bass line continue. The piece ends with a *V.S.* (Verso) instruction.

V.S.

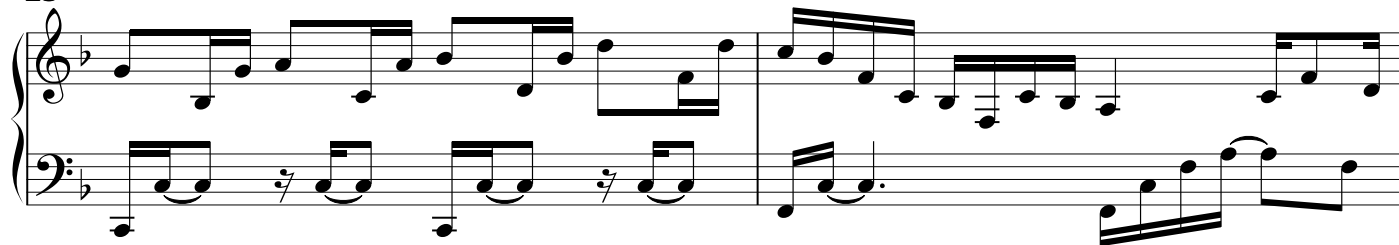
COPYRIGHT © 2013 BY RICKY VALADEZ
MAKING COPIES FOR NON-COMMERCIAL USE IS PERMITTED.
FREE AT RICKYVALADEZ.COM

I FEEL MY SAVIORS LOVE
PIANO

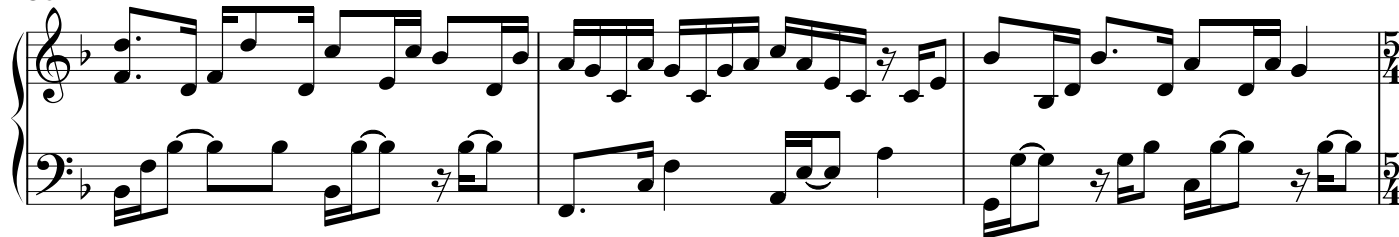
25



28



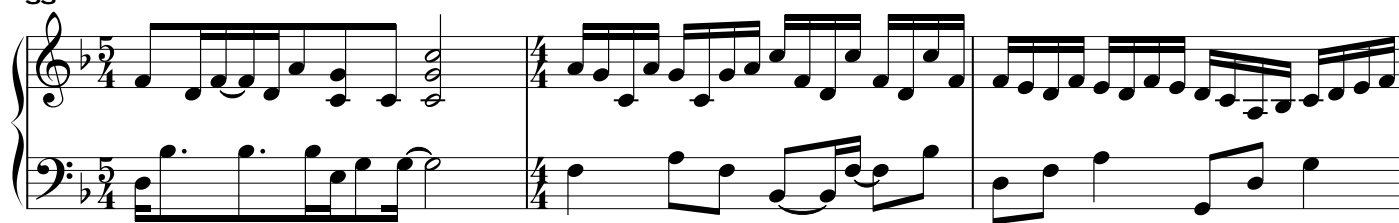
30



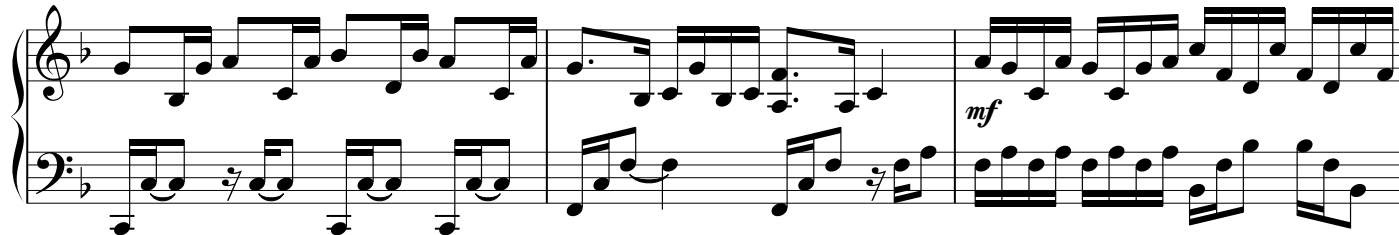
33

RIT.

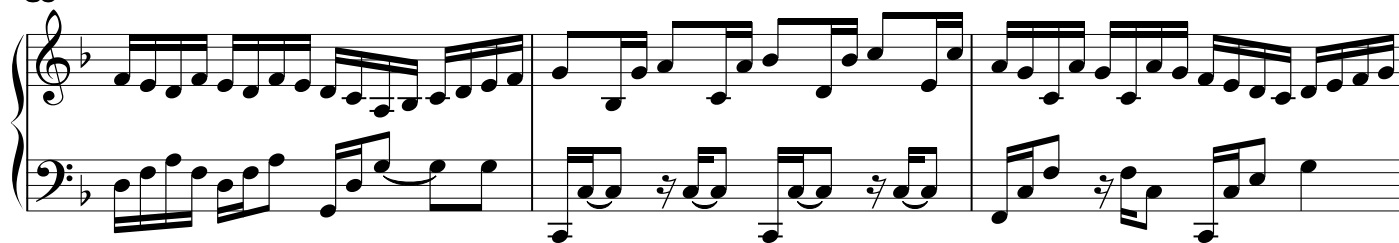
A TEMPO



36



39



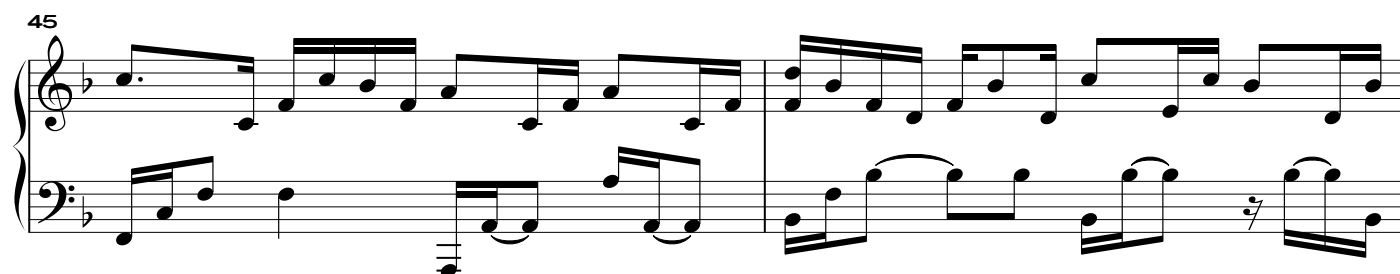
I FEEL MY SAVIORS LOVE
PIANO

3

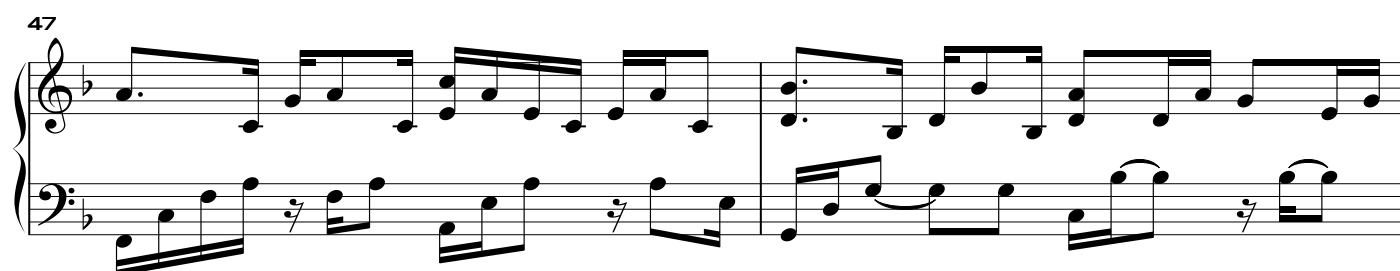
42



45



47



49 MOLTO RIT. A TEMPO



52



55 MOLTO RIT.

