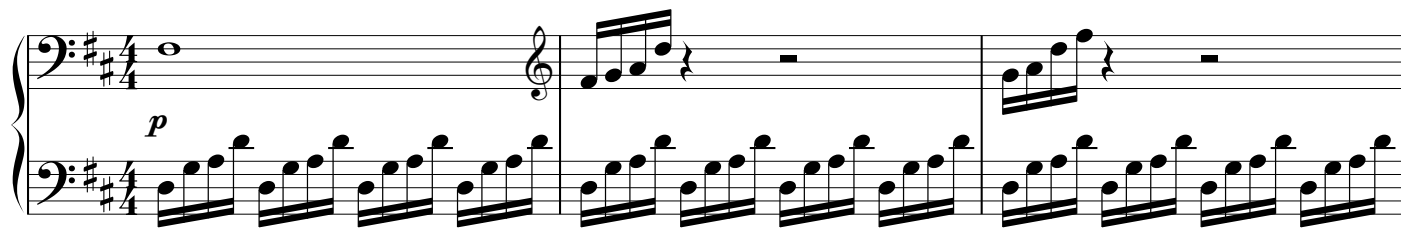


PIANO

CONSIDER THE LILIES

COMPOSED BY ROGER HOFFMAN
ARRANGED BY RICKY VALADEZ

$\text{♩} = 63$

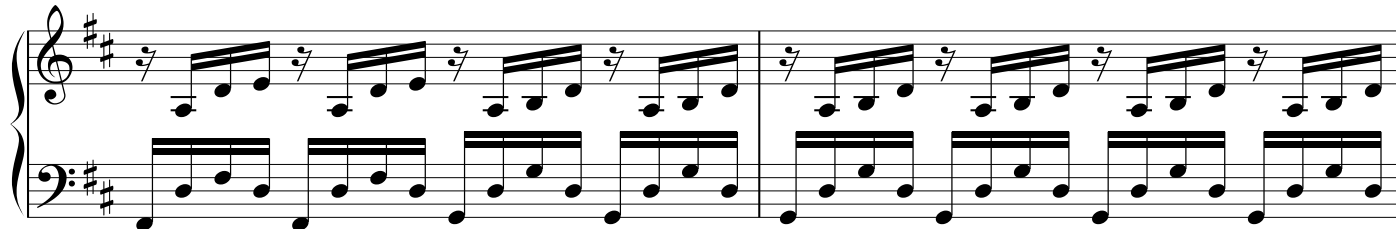


V.S.

COPYRIGHT © 2015 BY RICKY VALADEZ
MAKING COPIES FOR NON-COMMERCIAL USE IS PERMITTED.

CONSIDER THE LILIES
PIANO

15



17



20 RIT.

A TEMPO



22



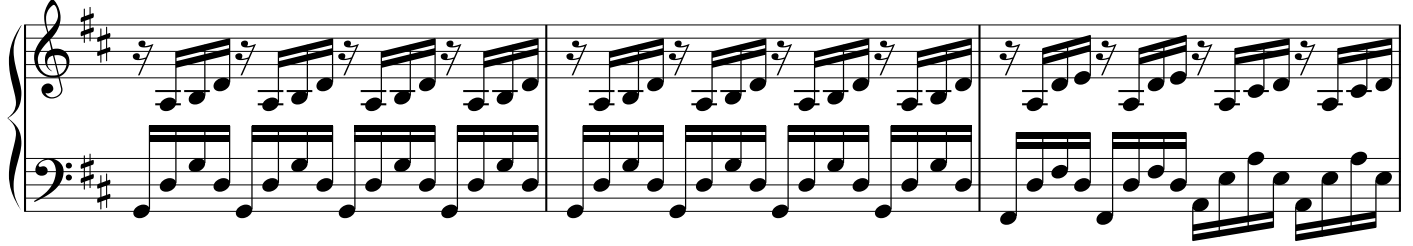
24



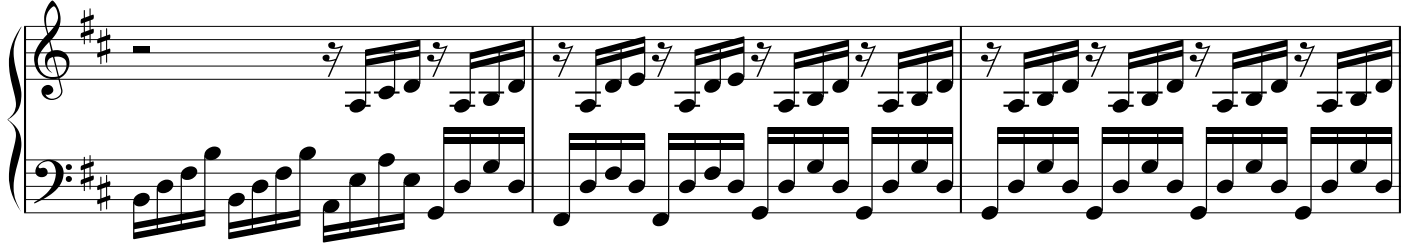
CONSIDER THE LILIES
PIANO

3

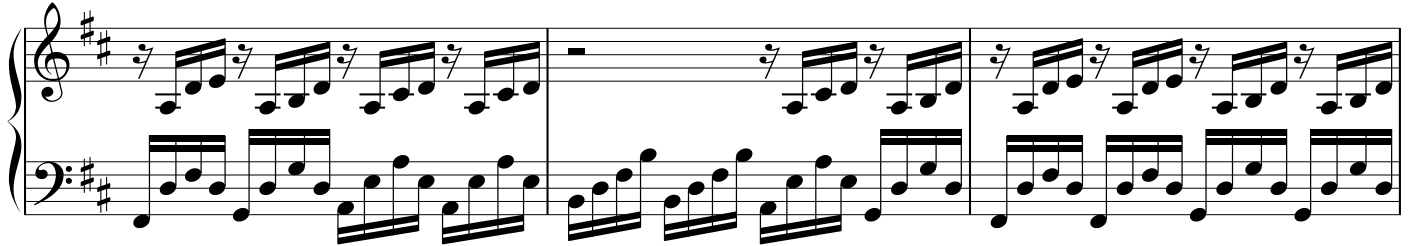
27



30



33



36

MOLTO RIT.

A TEMPO

RIT.



38

A TEMPO



V.S.

CONSIDER THE LILIES
PIANO

43

Measures 43-46. Treble clef has rests with eighth-note beams. Bass clef has chords (F#4, C#5) and a descending eighth-note scale (B4, A4, G4, F#4, E4, D4, C4, B3).

47

Measures 47-49. Treble clef has eighth-note beams. Bass clef has a steady eighth-note accompaniment.

50

Measures 50-51. Treble clef has eighth-note beams. Bass clef has a steady eighth-note accompaniment. Measure 51 ends with a 6/4 time signature change.

52 RIT.

Measures 52-53. Treble clef has eighth-note beams. Bass clef has a steady eighth-note accompaniment. Measure 53 ends with a 4/4 time signature change. Dynamics: *mp* in measure 52, *pp* in measure 53.

53 A TEMPO

Measures 53-54. Treble clef has eighth-note beams. Bass clef has a steady eighth-note accompaniment. Measure 54 ends with a fermata. Dynamics: *p* in measure 53, *pp* in measure 54. A *dim.* marking is at the bottom of measure 53.